



BRUTON ART SOCIETY NEWSLETTER

www.brutonartsociety.co.uk

Lectures * Workshops * Exhibitions * Coach Trips * Painting Days

Chairman's Statement

Bruton Art Society Celebrates 70 years with a Special Award and a Party

This year marks the seventieth anniversary of the founding of the Bruton Art Society. Established in 1953 by Mrs Joy Barnes, its first president was the distinguished sculptor Ernst Blensdorf. From the start its Annual Exhibition achieved a reputation for excellence in the region, and this standard has been maintained to the present day.

To celebrate, the Society will be mounting a special display at its exhibition. It will also be enhancing its main award, the Joy Barnes Award. Named after the Society's founder, who was also its President for many decades, it will be called this year the Joy Barnes Jubilee Award. The amount of the Award on this occasion will be raised to £500.

The Society will also be hosting a celebratory garden party for all members on Sunday July 9th at Knowle Rock, Shepton Montague. We are most grateful to committee member Corinna Leigh-Turner for making this marvellous venue available. Let's hope we have good weather on the day!

Will Vaughan
Chair

A brief history of Bruton Art Society

Joy Barnes established the Bruton Art Society in 1953. It should not be forgotten that Joy was herself an exceedingly fine artist who trained at Chelsea School of Art, where Henry Moore was her tutor for sculpture, and Graham Sutherland for illustration; she retained a strong interest in contemporary and progressive art. Her work was much appreciated locally and examples can be found in many collections. Joy was deeply committed to the Society, serving first as Chair and then as President. She played a central and fully active role in the Society's activities until, at the age of 100, she had to retire to a nursing home. She retained a keen interest in the Society until the end. Seventy years on and the Society has more members than ever, and continues to thrive with an exciting programme of activities coming up this year!

The Jubilee Summer Garden Party

Corinna Leigh-Turner: *"I am proud to be a member of such a fine society and most recently having been opted onto the committee, I wish to make a contribution to this momentous anniversary by offering Knowle Rock as the venue for the Garden Party."*

The Chairman and Committee look forward to meeting many Bruton Art Society members at the party, which is from **2.30 - 5.30 pm** on **Sunday 9th July**.

Victoria Garland A Profile



Victoria at her printing press

late. Something clicked with print-making and over a twenty year period she started experimenting with making lino and wood cuts and began a short printing course at what was then the Arts Institute Bournemouth. Initially collagraphs caught her attention but as time went on, she realised she needed something that offered more finessed detail and started to think about etching. The turning point came when she bought her own Rochat press and managed to squeeze in the time to continue to teach herself the process of intaglio printmaking.

This is a labour intensive process and Victoria talked me through it. *"It starts with a drawing just to decide the scale and the bones of the image then I transfer just the barest information to the plate and begin working. But it can take a long time because the whole process is lengthy as you have to etch different depths of lines."*

To achieve this, the plate is put in the etching bath a number of times and requires stopping-out varnish to protect the lines that you don't wish to etch any deeper. The depth of etched line dictates how much ink is held beneath the surface of the plate, a deeper etch achieves a heavier darker line. If you want a variety of tones on your plate then you apply an aquatint which follows the same method of etching and stopping-out. So if you are doing a big plate of 18-24 inches it can take a long time but this also gives me a period to think while doing the stopping-out process. I think it is quite forgiving. It allows you to think. If I was quick and impatient I probably wouldn't be an etcher".

For over 20 years Victoria walked her dog every day in the New Forest where pigs are put out to pannage for acorns every Autumn. She enjoyed sketching the pigs as they rootled through the leaf litter feeding on the fallen acorns which would otherwise poison cattle and horses, and the pigs morphed into her impression of a boar

A small etching was the first piece of original art I ever purchased and is of a cat asleep in an armchair curled up against the pale blue of a small cushion. It spoke to me of warmth, safety and complete, deep relaxation. Victoria's etchings of the countryside draw me in in exactly the same way, placing me in soft light and misty air with the crisp chill of a winter's day prickling my cheeks as I stand there in her delicately etched landscape, walking the track beside the ancient sculptured hedgerows.

Having grown up in Sydney Australia, Victoria came to live in England in her early 20's and continued to sketch the landscape around her. While walking her dog in the New Forest and Dorset, it was the British trees with their winter-bare sculptural shapes and seeing the sky through the branches that caught her interest and that she felt she had to try to trans-



"Night, Trinity Churchyard"



"Butterfly Plant"

which is now her latest collagraph, and another much smaller etching. This little etching is printed on Japanese paper mounted onto Khadi paper and then gilded with 24 carat gold leaf which gave her much enjoyment to apply. As she says *"I did do a gilding course 30 years ago at West Dean so it's all hand gilded with proper gold leaf all the way round and it just seems to work"*.

She has been exhibiting her work for almost 20 years and in 2021 was elected a member of the Bath Society of Artists, and was asked last year to contribute to the Contemporary Cuts exhibition at the St Barbe Art Gallery & Museum in Lymington showcasing print-making by both national and local printers.

"I thought that was a huge honour because in 2005, the first time I ever put any work out into the world was an Open Exhibition at St Barbe, so 17 years later to be invited to join in, I thought that was very exciting for me and a personal best".



"Pig Gone Wild"



"Shadows"



"Flown"



"Waiting, Watching"

Although Victoria doesn't use colour or practice painting she loves it and is attracted to artists who do, often visiting Pallant House in Chichester to see work by Ivon Hitchens. In her work she feels it is atmosphere that attracts her and uses hand-applied aquatint which gives her the tone on the plate and a nice balance between line and aquatint. As I stood looking closely at the detail in Victoria's exquisitely worked etchings, I was struck by the contrast of the delicacy of the work and the strength of the image whether in the breast feathers of an owl seen at a country show or the complex tangle of twigs on the branch of a wintery oak. Her sense of composition and the detail in the execution is truly superb.

Eleanor Milton

James Budden Live Painting Demonstration 'A Practical Approach to Portraits' - Dorrie Peat

Despite the weather, over 40 enthusiastic members of Bruton Art Society were at Caryford Hall to watch and listen as James set about painting a portrait of Mark, our model for the afternoon. James talked throughout the process, which took about 2 hours. Every decision he made was explained to us by his 'thinking aloud' and it was fascinating to share the journey with him. Despite his modesty of not promising that we would like the finished portrait, we were not disappointed as the magic of a likeness appeared before our eyes.

When James was finally satisfied that it was finished, he was given a resounding round of applause and the audience gathered round to engage in conversation with the artist. It was a treat to see James back for his second portrait demonstration and one which was truly inspiring!

"That was SUCH a good demo this afternoon. Thank you so much. What a talented chap - and so generous with his advice and time."





Allan Howles - Painting Days

Allan Howles has recently joined our committee and will be in attendance at the venues of our painting days this year. He is a retired architect, a partner of Beech Tyldesley Architects in Wells for 27 years before completing his 40-year career as a sole practitioner working from his home in Yarlington Somerset. He is a past chairman of the Somerset branch of the Royal Institute of British Architects. He recently married a former committee member and professional artist Alexandra Drysdale. His meticulous drawings are in pen and ink and many are of the landscapes local to his home. He also accepts commissions to draw the houses of individual clients.



Cottage Pitcombe Somerset



Sutton Montis from Cadbury Castle



Monterey Pine Stoke Fleming Devon



Bonsall Derbyshire

Painting days are from 10am - 3.30pm. Bring lunch and usual materials

Thurs 25 May - PAINTING DAY at Knowle Rock, Shepton Montague, BA9 8JA Kindly hosted by Corinna Leigh-Turner

Thurs 8 June - PAINTING DAY in Glastonbury at Elmcroft, 11 The Roman Way, BA6 8AB Kindly hosted by Joanna Cobb

Thurs 22 June - PAINTING DAY at Zeals Green House, Zeals, BA12 6NH Kindly hosted by Lyndi d'Ambrumenil

Thurs 29 June - PAINTING DAY at The Manor House, Compton Pouncefoot, BA22 7EL Kindly hosted by Michael Keene

Mon 17 July - PAINTING DAY at Parsonage Farm, Swallowcliffe, Wilts SP3 5NU Kindly hosted by Juliet Chilston

Thurs 31 August - PAINTING DAY at Bowling Green, Milborne Port, Dorset DT9 5AX Kindly hosted by Rebecca & Roger Emery



Artist Profiles

As editor of the BAS Newsletter and on behalf of Bruton Art Society, I would like to thank John Baxter for the many excellent Artist Profiles which he has written over the years. John has now handed over the role to Eleanor Milton, leaving a wonderful record of our Artists which can all be viewed on the BAS website. Eleanor's first profile of BAS Member Victoria Garland can be found in this Newsletter.

Thank you John and welcome Eleanor.

Dorrie Peat

70th Annual Exhibition News

Our 70th Annual Exhibition will take place at the Memorial Hall, Kings School, Bruton this summer from the **19th to the 26th August**.

The "Call for Entries" opens on the **2nd May** and the submission deadline is midnight, on the **20th June**.

We are only accepting submissions through the OESS online system this year, but we want to make sure no exhibiting member is excluded from entering their work, so for those few members who don't have computer access or who find it impossible to photograph or upload their work, we have Committee members on standby to help.

For those members with email, a link to the OESS website will be sent out as last year and letters by post with a helpline telephone number will be sent to those few members without.

Good luck and remember, because it's our 70th Year of Exhibiting, there is a special "Joy Barnes Jubilee Award" to the value of £500 for a piece of work chosen exclusively by the Committee members.

Exhibition Sub Committee

Workshops at Hadspen Village Hall

Sally Ridout

Thurs 11 - Fri 12 May	2 DAY WORKSHOP 'Life Drawing' Untutored workshop with husband & wife models Apply Bookings Officer with fee of £75 by 27 April. Hadspen Village Hall BA7 7LX	10am - 4pm
Fri 19 - Sat 20 May	2 DAY WORKSHOP 'Three ways to paint an Abstract' Tutor: DAVID CHANDLER Apply Bookings Officer with fee of £75 by 5 May. Hadspen Village Hall BA7 7LX	10am - 4pm
Thurs 15 - Fri 16 June	2 DAY WORKSHOP 'Printmaking Workshop' Tutor: JACKIE CURTIS Apply Bookings Officer with fee of £75 plus £5 for materials by 1 June. Hadspen Village Hall BA7 7LX	10am - 4pm
Fri 30 June - Sat 1 July	2 DAY WORKSHOP 'Printmaking using Drypoint Plastic' Tutor: WILL VAUGHAN Apply Bookings Officer with fee of £75 plus £5 for materials by 16 June. The Old House, Lower Cockhill, Castle Cary, BA7 7NZ	10am - 4pm
Thurs 21- Fri 22 Sept	2 DAY WORKSHOP 'Still Life Collage in Fabric and Mixed Media' Tutor: IMOGEN BITTNER Apply Bookings Officer with fee of £75 by 7 Sept. Hadspen Village Hall BA7 7LX	10am - 4pm
Fri 13 Oct	1 DAY WORKSHOP 'Mixed Media Landscapes' Tutor: AMANDA BEE Apply Bookings Officer with fee of £40 by 29 Sept. Hadspen Village Hall BA7 7LX	10am - 4pm
Sat 11 Nov	1 DAY TALK/WORKSHOP 'Paint like a Cubist' Tutor: SALLY RIDOUT Apply Bookings Officer with fee of £40 by 28 October. Hadspen Village Hall BA7 7LX	10am - 4pm

The first workshop this year - “Animal Sculptures in Clay”

What a wonderfully creative (and messy !) way to start this year’s Bruton Art Workshops, with Pippa Hill at Hadspen Village Hall, on the 16th and 17th March.

There were greyhounds, otters, horses and squirrels, you name it and Pippa brought some of her beautiful sculptures of foxes, hares and badgers to show the group. Everyone was encouraged to work ‘big’ and some folk even managed to make two or three sculptures.

After two days of deep concentration and activity, I know most people needed a rest!

Pippa will be firing the sculptures for those who want to and some will be able to stand outside in the garden because of the kind of clay used.

A big thank you to Pippa for lugging all those heavy bags of clay into the hall and for all the guidance and experience she passed on.

Sally Ridout



A record of workshops from last year

"Two day Watercolour Workshop, designed mainly for beginners" with Maureen Bond



Members enjoyed a two day Watercolour Workshop in October, which was designed mainly for beginners, but was clearly enjoyed by some experienced artists as well. Maureen took us through the basic watercolour techniques with clear, well thought out demonstrations and advice and then encouraged us to apply our learnt experiences with our own creations, emphasising colour mixing, perspective and water effects.

One day Botanical Painting Workshop “Winter Berries” with Pauleen Trim HS/SBA Fellow

Winter Berries with
Pauleen Trim



Pauleen Trim came to give us a special one day Botanical Painting Workshop in October on the theme of “Winter Berries”.

People brought their own berries and Autumn leaves to paint and Pauleen of course had more. It was interesting to learn the difference between pure scientific illustration and decorative illustration and how Pauleen herself has been so successful in both disciplines, winning awards with the Royal Horticultural Society and now tutoring people all over the world online. She is also a Fellow of the Society of Botanical Artists.

Members praised Pauleen for her help and knowledge, combined with her calm encouragement. Even though it was only one day, we all felt that the results were excellent.

A one day Talk/Workshop - “Paint like the Fauves” with Sally Ridout

A challenging but fun day learning about the Fauves - (Wild Beasts). Firstly a PowerPoint presentation on their historical context, looking specifically at the work of painters such as Matisse, Derain, Vlaminck, Dufy and Braque within a background of early 20th century Europe and then a practical painting session, using and copying their style in bright colours and expressive brushstrokes.

This was followed by painting their own composition in a ‘Fauvistic’ style, using personal images, in bright primary colours (colour mixing discouraged!) flat planes and expressive brushstrokes; so loved by the Fauves.

This was a trial day to see if the format could be used again in the future. It seemed to be endorsed by everyone who took part, which means we will offer another one in 2023, using the same format, but on a different 20th Century European Art movement.

News from BAS Members

Ian Hedley

"In March I was fortunate enough to have three pictures selected for the Society of Graphic Fine Art's annual exhibition at Mall Galleries. It was my third year there but my first as an Associate Member. The exhibition was beautifully curated with a lot of really wonderful work on display."



New Hopes



The Isle of Portland from Redcliff Point



I Think of You



To advertise your news on the Bruton Art Society Website

Contact Peb Burfoot, the Website Manager on

websitebrutonart@gmail.com

www.brutonartsociety.co.uk

**BAS Members should inform the Membership Secretary of
any change of address, email or telephone number.**



Gary Cook RI SGFA

"I was proud to be part of back-to-back shows at The Mall Galleries in London recently. The Society of Graphic Fine Arts exhibited there followed by the Royal Institute of Painters in Water Colours where I was lucky to receive the Frank Herring Easel Award for Outstanding Work.

Five new watercolours will soon be appearing in The Gallery, Holt in Norfolk as part of their 'Drawn to Nature' exhibition from 3 June to 11 July. I also spent a lovely day walking on the South Downs following a section of the arrow-straight Roman road that leads from London to Chichester. Sketches and photographs of the raised flint track have resulted in ten new paintings for The Kevis House Gallery, Petworth, Sussex and will form part of their show to coincide with the Petworth Festival from July 12 to 30."



**Former editions of the BAS Newsletter can be viewed on
The Bruton Art Society Website**

www.brutonartsociety.co.uk

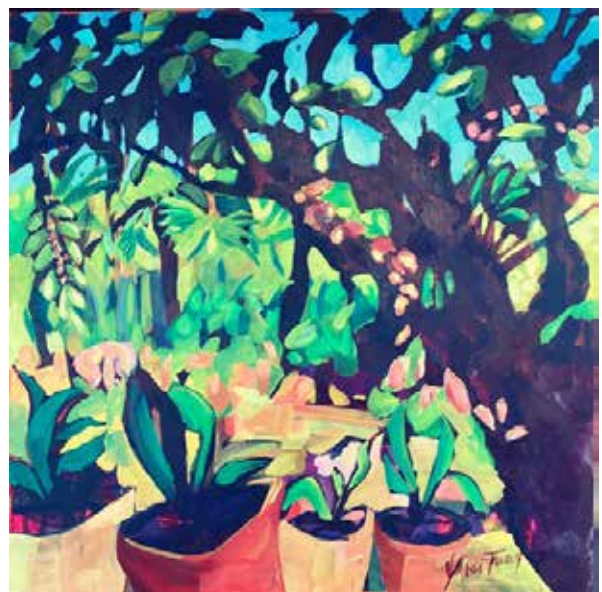
Vanessa Fawcett is a new member, who has successfully battled some of the toughest challenges, emerging stronger with a renewed respect for the healing power of nature and a renewed colourful view on life.

This spirit shines through her paintings as she rejoices in renewed empathy for this amazing natural landscape and its incredible healing powers.

Vanessa's latest work comes from a determination to share her joy and capture the dramatic beauty that she can now see. This personal journey has revealed a new palette of colour - the darkness has lifted, replaced by a new level of intensity and uplifting luminance. Owners of her work bring this inspiring energy into their homes and their lives. Recently Vanessa has been painting in Kilifi on the East Coast of Kenya.

Vanessa's work can be found around the world where private collectors find delight in her work.

Teaching workshops helping others find equal delight, exploring mark making in a safe and supportive environment encouraging personal development is something Vanessa enjoys immensely. Vanessa also enjoys working from life, landscape and nude studies to support her exploration of all things art. Sometimes working in 3D, sculptures and clay are also favourite mediums.



Karen George has an upcoming solo exhibition ‘**Wild Escapes**’ at The Square Club, Bristol. It opens on the 27th April through until the end of July.

There is a Private View on Wednesday 3rd May, 2 – 6 pm, to which everyone in Bruton Arts Society is invited.

(Please email Karen on karengeorge@trenjorydesigns.co.uk to confirm attendance.)



The Yarlington Fringe 2023 will take place on 28-30th April

This biennial event is hugely popular with music, workshops, dancing and making merry, and includes an Art Exhibition. This year it is organised by BAS member Alexandra Drysdale. There are 29 artists exhibiting, including 7 BAS members: Will Vaughan, Biddy Peppin, Sue Hardy, Corinna Leigh-Turner, Terri Hogan, Allan Howles, Alexandra Drysdale, and former member Marissa Weatherhead.

YARLINGTON FRINGE 2023

Friday April 28th to Sunday April 30th

Barn Dance with Kangaroo Moon

Friday 8pm

The Fantasy Orchestra

a kaleidoscopic symphonic brigade from Bristol
Saturday 8pm

'Carmen' from scratch with Karen Gillingham
Performance 5.30pm Sunday

The Langport Mummers

Sunday 12 noon

**continuous live music, craft, dance
and music workshops**

Saturday and Sunday from 11am

art exhibition all weekend

**BBQ, café and celebration of local
beers and ciders**

*all events are **FREE** – funded by your support of the food and beer tents*

for further information email jane@davidbraybon.com

or chapelcross@gmail.com



and check facebook.com/yarlingtonfringe



Jenny Farrer will be taking part in the Wylve Valley Art Trail, which starts on **29th April** and goes on till the **8th May**. Unfortunately the trail also spans the Coronation and the Bank Holiday of 8th May. Jenny is exhibiting with a group called **Lower Lawn Barns Group** at **Number 11B** in the brochure. She is exhibiting paintings which are mainly land and sea scapes, and still lifes under her maiden name, which is de Sausmarez. Jenny is also taking part with the **Deverill Valley Art Group**, venue number 48. See the Venue Map at: <https://wvat.co.uk/venues/>



Philippa Hicks & Lyndi d'Ambrumenil will be exhibiting a selection of paintings for the 2023 Wylve Art Trail at venue no 41 in Zeals. It would be lovely to see everyone. Tea, coffee and cake will be available!!

Gabrielle Bill will be exhibiting at the **Shaftesbury Art Centre Gallery**, a series of small framed works of mountain landscapes, local scenery and still lifes.

All of which are part of the Wessex painters exhibition from

Wednesday 3rd May to Tuesday 9th May
10am – 4pm



FACETS

Paintings by
Maggie Wyman at
Sou Sou West
Contemporary Art Gallery

6th May to 28th May

10:30 – 4:30

Symondsbur Estate Bridport
DT6 6HG

Phone 01308 301326

hello@sousouwest.co.uk
contact@lymebavarts.co.uk



Sally Ridout will be exhibiting with other BAS members at Shaftesbury Arts Centre
from **10th - 16th May**.



An Exhibition of work by members
of
artists303

10th - 16th May 2023

Shaftesbury Arts Centre
13 Bell Street
Shaftesbury
SP7 8AR

Artists303 is a professional group of artists living
and working along the A303 trunk road.
The group was formed in 1965 and continues to this day, members
having exhibited extensively in Galleries around
the West Country and farther afield.

Open daily 10am to 4.30pm (including Sunday)
Free Admission

www.artists303.org.uk

BAS member, **Jane Barnard** and her daughter **Laura** are having an exhibition. **Line of Sight**, at Shaftesbury Arts Centre
7th – 13th June Open daily **10am to 4.00pm**

Line Of Sight is a showcase of paintings, drawings and prints from the perspective of Jane's abstract colourist approach and Laura's semi-abstract landscapes.

Jane and Laura will both be at the gallery on **Sunday 11th June 2-4**.

For further information see janebarnard.co.uk or laurabarnardart.co.uk.



Life Drawing at Charlton Musgrove Village Hall

We have spaces available for anyone to join our friendly life drawing group on Tuesday mornings at Charlton Musgrove Village Hall, 10 – 1. We have a range of experienced models. This group is ideal for those who wish to try life drawing. While it is not a taught group the members are supportive and happy to help.

If you would like to know more information, please contact **Jane Barnard** at

janebarnard@talktalk.net
or 07500 870702.



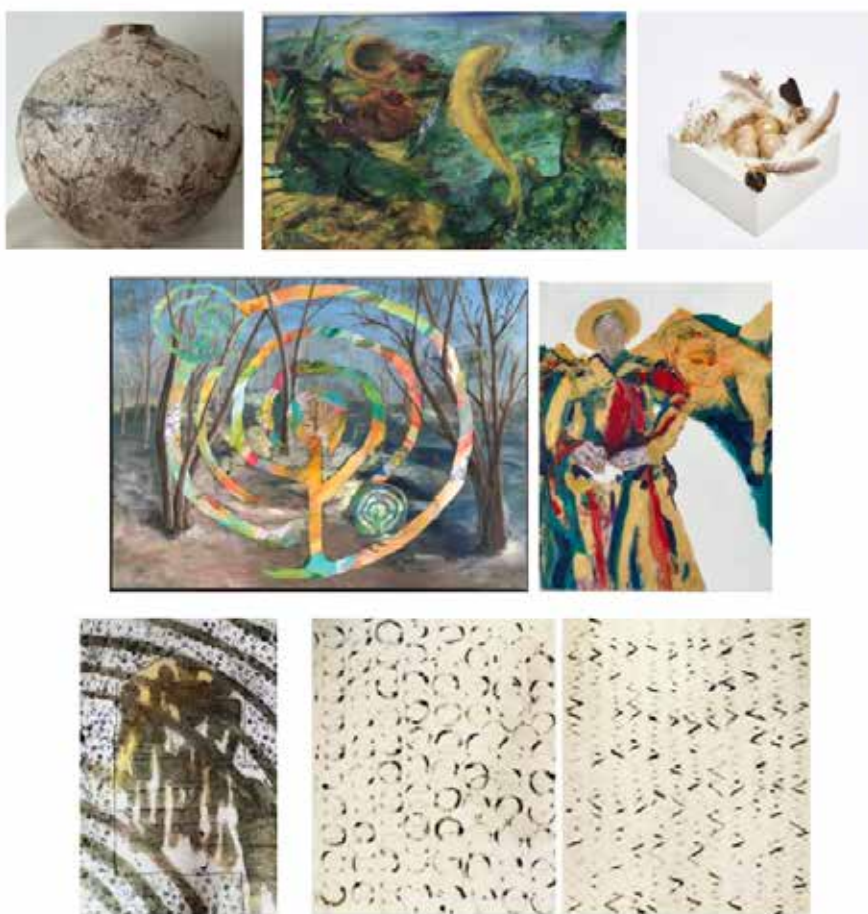
**Jane Eaton will be exhibiting at
the 50th Anniversary Art Exhibition
On Hospitality, Peace & Reconciliation**

Opening Thursday 1 June 7pm - 9pm

Opening times: 10.30 am - 12.30pm & 2pm - 6pm

2-4 June, 12-15 June, 8-13 July

2pm - 9pm on 16 July



Tel: 01761 433709

Email: centre@ammerdown.org

The Ammerdown Centre, Ammerdown Park, Radstock, Somerset BA3 5SW

CALLING ARTISTS IN NORTH DORSET

After a successful local Art Trail in 2021 we are now planning the second Blackmore Vale Art Trail taking in the area shown on the map. If you are interested in taking part contact

Andrea Jenkins on andrea13jenkins@gmail.com

BV Art Trail



9 - 17 September 2023

Commitment by payment by 9th May

A Very Special Illustrated Talk

Crowning Glory

Monarchs, Marriages, Mistresses...

by **Colin Wiggins**

(Former National Gallery official lecturer)



Sunday 30 April 2023

4 p.m. Caryford Hall, BA7 7JJ

A glimpse at our glorious past
through the eyes of the finest artists.

**Tickets £10 from Bailey Hill Bookshop (from 1 April)
& on the door if space allows.**

Doors open 3.30 pm. Refreshments.

**Bone China Castle Cary Coronation Mugs
will be on sale at this event.**

In aid of the Castle Cary Market House Project

Supported by the Cary History Society

The Crown Jewels



*An Illustrated Talk by
Sir Jonathan Marsden*

*Former Director of the Royal Collection
& Surveyor of the Queen's Works of Art
Sunday 28 May at 4 p.m.*



*Caryford Hall, BA7 7JJ
Doors open at 3.30 - Refreshments
Tickets £10 from Bailey Hill Bookshop from 2 May
In aid of the Castle Cary Market House Project.*



Supported by the Cary History Society